

OFFICE SPACE FOR LEASE

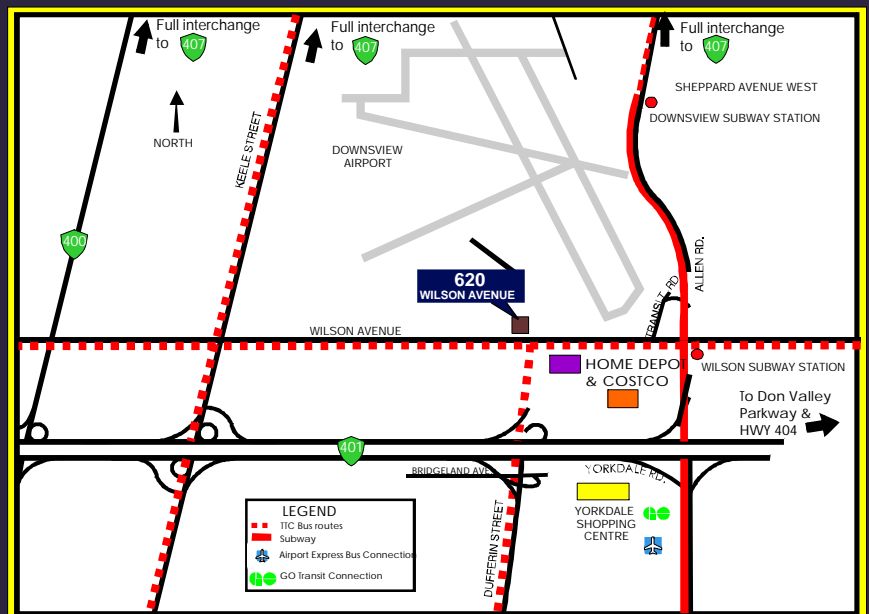
940 s.f. Available Immediately



620 Wilson Ave., Ste. 330
Toronto, Ontario

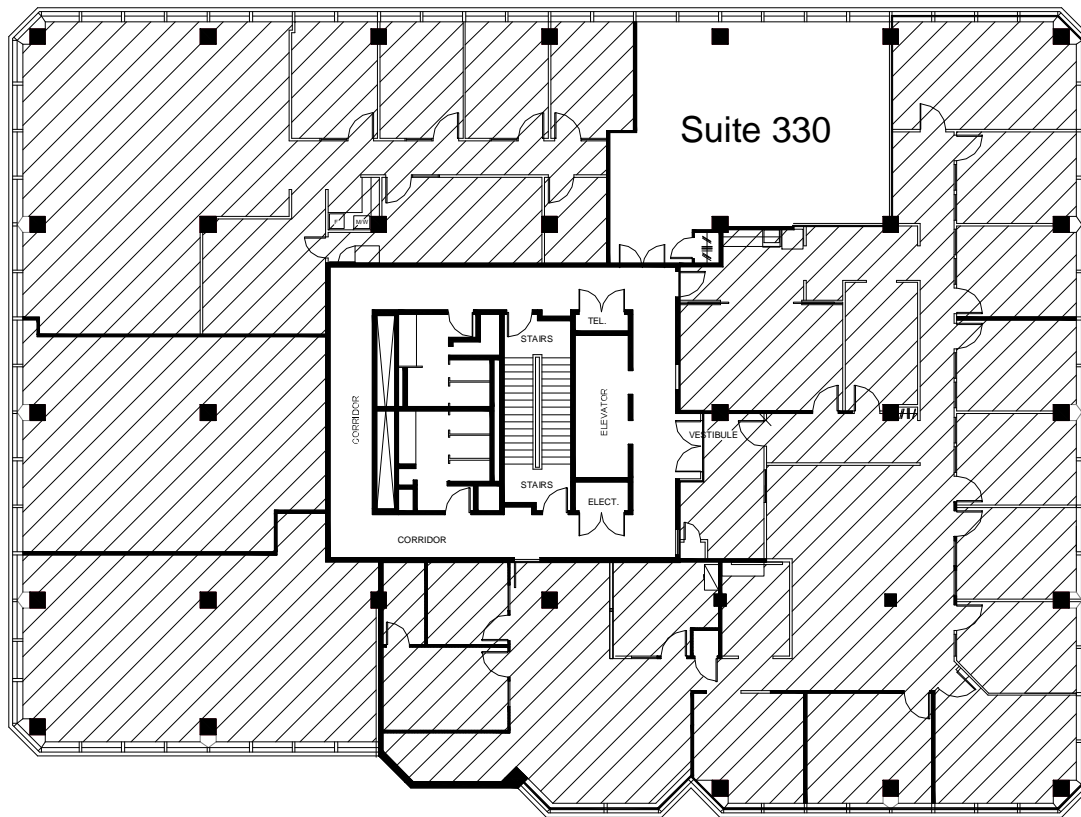
EMERY
INVESTMENTS

Mary Wood
&
Elana Quinn
416-630-6927



OFFICE SPACE FOR LEASE

940 s.f. Available Immediately



PROPERTY DETAILS

Occupancy: Immediate

Space Available: 940 s.f.

Parking:

Card access underground parking
at a ratio of 3 cars per 1,000 s.f.

Free surface parking for visitors.

Access:

Excellent access to Hwy. 401 &
Allen Expressway.

Public Transportation:

TTC at doorstep. Walking distance
to Wilson Subway Station.

Amenities:

On site management office.

Coffee shop in building.

Air Quality:

Ten thermostatically controlled
zones per floor.

EMERY
INVESTMENTS

For Leasing Information:

Mary Wood & Elana Quinn

Telephone: 416-630-6927

E-mail: info@emeryinvestments.com

Web-Site: www.emeryinvestments.com

620 Wilson Avenue Suite 401, Toronto, Ontario M3K 1Z3 Tel: 416-630-6927 Fax: 416-630-6997