

# OFFICE SPACE FOR LEASE

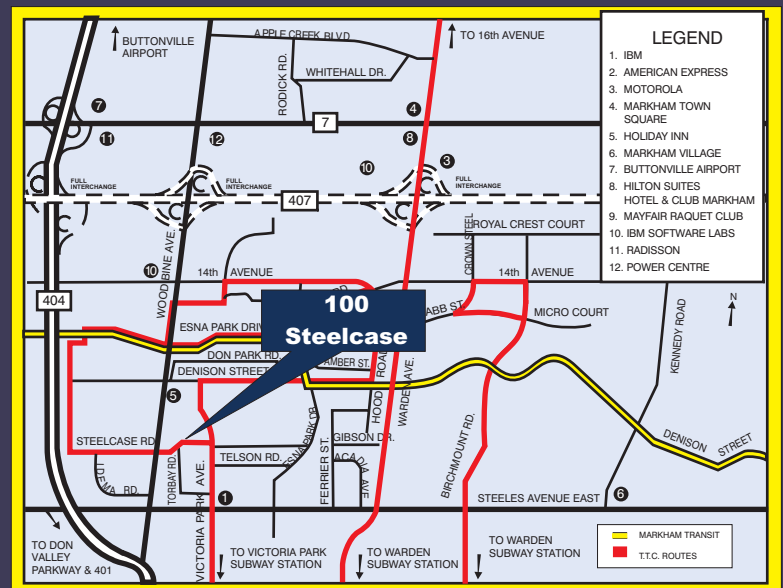
## 6,672 s.f. Available Immediately



**100 Steelcase Rd.E., Unit 202**  
**Markham, Ontario**

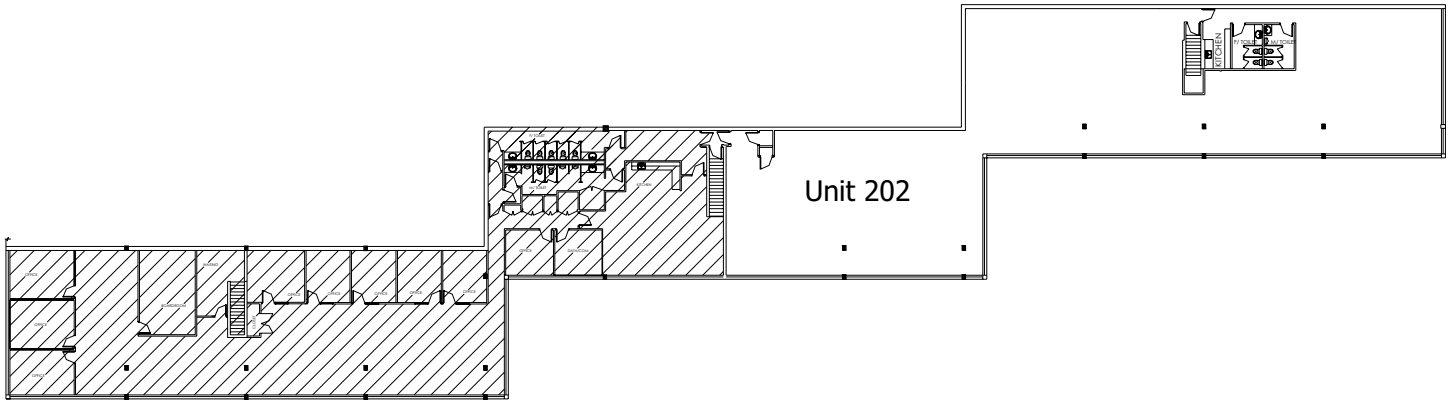
**EMERY**  
 INVESTMENTS

**Mary Wood**  
 &  
**Elana Quinn**  
**416-630-6927**



# OFFICE SPACE FOR LEASE

## 6,672 s.f. Available Immediately



### PROPERTY DETAILS

**Construction:**

Brick & block with tinted glass.  
Office is on 2nd floor. Walk-up.

**Occupancy:**

Immediate

**Space Available:**

6,672 s.f.

**Parking:**

Ample surface parking.

**Access:**

Excellent access to major Hwys.  
407, 404, 401 & DVP.

**Public Transportation:**

TTC on Steeles Ave. connecting to  
Victoria Park Subway Station.

# EMERY

INVESTMENTS

For Leasing Information:

Mary Wood & Elana Quinn

Telephone: 416-630-6927

E-mail: [info@emeryinvestments.com](mailto:info@emeryinvestments.com)

Web-Site: [www.emeryinvestments.com](http://www.emeryinvestments.com)