

# INDUSTRIAL SPACE FOR LEASE

## 5,890 s.f. Available June 1, 2010

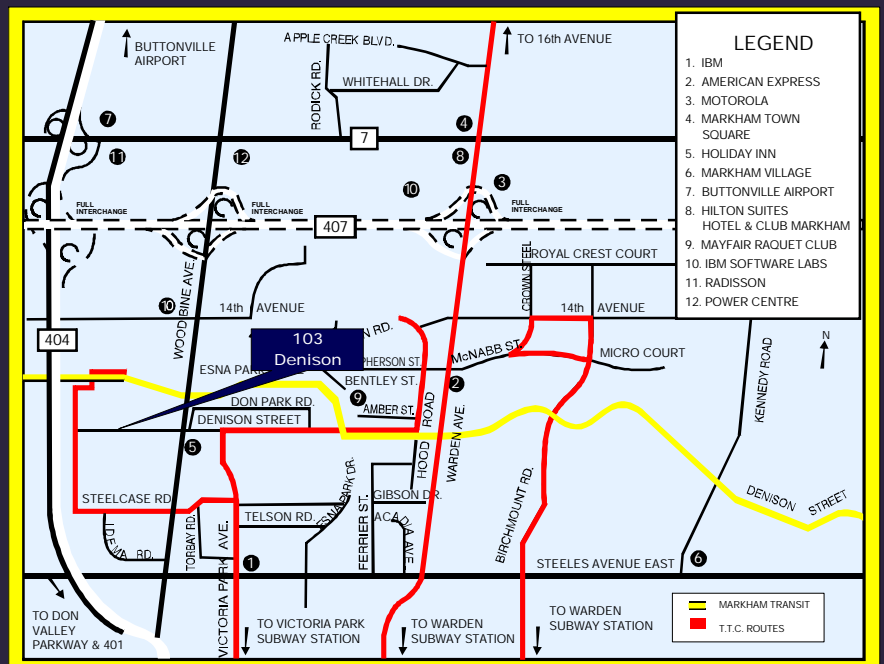


**103 Denison Street, Unit 2**  
**Markham, Ontario**

# EMERY

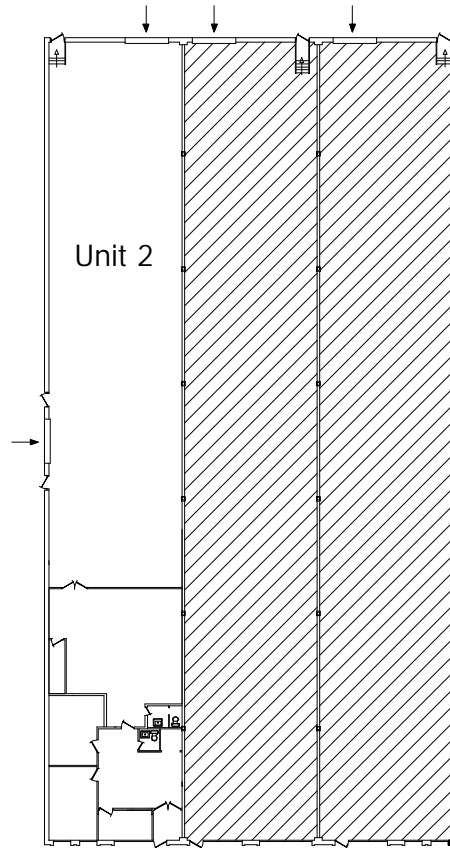
INVESTMENTS

Mary Wood  
&  
Elana Quinn  
416-630-6927



# INDUSTRIAL SPACE FOR LEASE

5,890 s.f. Available June 1, 2010



## PROPERTY DETAILS

Occupancy: June 1, 2010  
Space Available: 5,890 s.f.  
Office: 1,780 s.f.  
Hydro: 100 amps/600 volts  
Shipping: 1 Truck-level  
1 Drive-in  
Height: 16' clear

Bay Size: 31' x 26'  
Access:  
Excellent access to major Hwys.  
407, 404, 401 & DVP.  
Public Transportation:  
TTC on Steeles Ave. connecting to  
Victoria Park Subway Station.

**EMERY**  
INVESTMENTS

For Leasing Information:  
Mary Wood & Elana Quinn  
Telephone: 416-630-6927  
E-mail: [info@emeryinvestments.com](mailto:info@emeryinvestments.com)  
Web-Site: [www.emeryinvestments.com](http://www.emeryinvestments.com)